



NANOPTIX – EZTEAR PRINTER PRINT HEAD CLEANING INSTRUCTIONS

June 2005

CLEANING THE PRINTHEAD

Note: Under normal operating conditions, the minimum interval for cleaning the thermal print head should be 5km of paper.

1. Disconnect power, open printer door and vacuum access dust and ashes that may have accumulated.

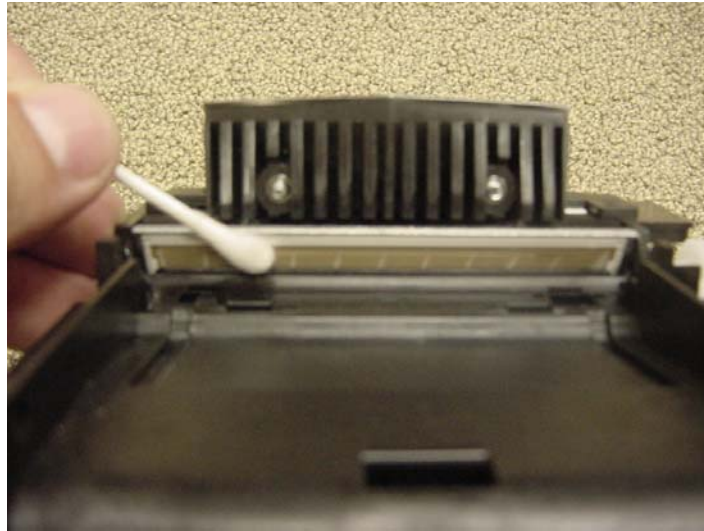


2. Clean the roller with a cotton swab and isopropyl alcohol.



3. Clean the print line (black line on the print head) with a cotton swab and isopropyl alcohol.

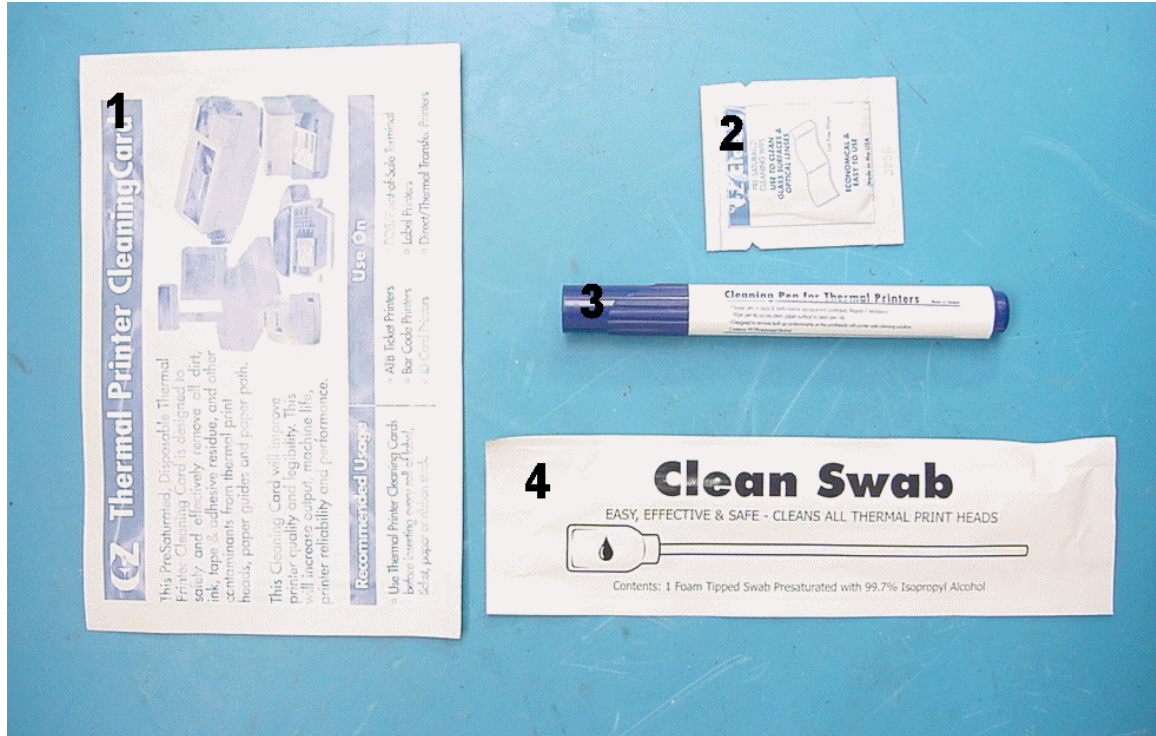
- Expanded View



- Close Up View



Many cleaning products are available from Nanoptix Inc.



1. **Cleaning Cards:** Each card is conveniently pre-saturated and sealed in foil to ensure a clean card and the proper amount of solution for each cleaning.
2. **Cleaning Wipes:** Pre-saturated lint free wipes for multiple technical cleaning uses. Non-smearing, quick drying, and easy to use. Available in convenient tear-open pouches ensuring optimum condition prior to use.
3. **Cleaning Pens:** Holds a cleaning solution of 99% pure isopropanol alcohol in the reservoir barrel. It is ideal for the technician's tool bag. It is suitable for a quick and safe swipe cleaning of easily accessed print heads
4. **Cleaning Snap Swabs:** Plastic reservoir handle holds isopropanol (IPA) alcohol and is "snapped" to release this cleaning agent onto the spatula foam tip.

For Information and inquires please contact

Gilles Robichaud

Nanoptix Inc.

699 Champlain Street

Dieppe, NB, Canada

E1A 1P6

Tel : 506.384.3388 x213

Fax : 506.384.3588

E-mail :

Web site: www.nanoptix.com